



Fall 2012

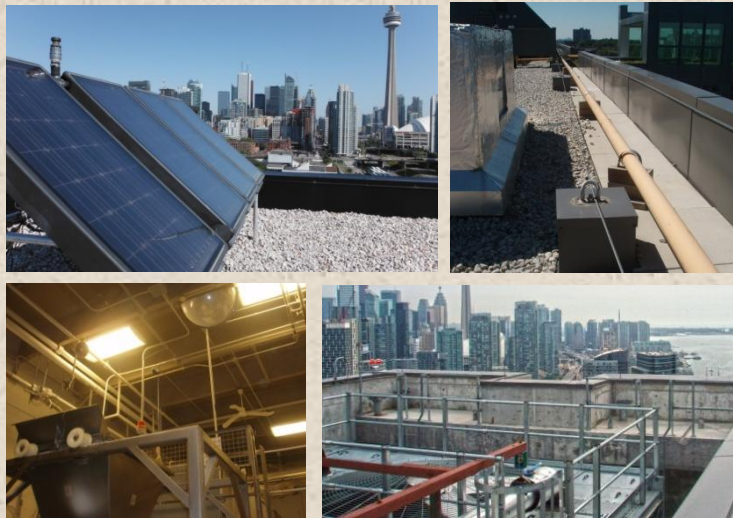


# ROOF ANCHORS BULLETIN

## focus on FALL PROTECTION...

**Fall Protection** is essential and a mandated requirement when safeguarding workers from fall hazards at height. In its most basic definition, **Fall Protection** is to be provided in any instance where worker is within 2 metres (6'-6") of the unprotected edge of a walking/working surface and there is a danger of falling 3 metres (10'-0") or more, or, a danger of falling less than 3 metres (10'-0") onto a hazardous surface or item. **Fall Protection** has varied applications, from rooftop access systems to industrial maintenance and servicing.

Rooftop applications where workers might be exposed to fall hazards are: solar arrays, mechanical unit maintenance, planter and green roof maintenance, satellite installations, skylights, openings and ladders.



Industrial applications are similarly varied in scope. **Fall Protection** shall be incorporated to ensure lessened risk of falls when performing maintenance at height, when loading/unloading items and substances at height, where restricted vertical access is required, when approaching restricted access zones and when traversing hazardous pathways.

Ascent Consulting has the requisite expertise to address your specific **Fall Protection** needs and we provide you with recommendations and solutions that best fit your requirements. Contact us today or visit [ascentcon.ca](http://ascentcon.ca) for more information.

**A**scent consulting

[www.ascentcon.ca](http://www.ascentcon.ca)

DESIGN | INSPECTIONS | CONSULTATION



*For your consideration:*

❖ **Be ready for Spring cleaning!** Did you know that now is the opportune time to conduct your annual window washing safety system inspection? **Autumn** weather is ideal to perform remedial maintenance work that may be required, especially after summer usage.

*...we have 1st hand experience of the mad Spring rush and it is not pretty*

❖ We take the "guesswork" out of misinformation. Our vast knowledge of most, if not all, safety anchor/equipment manufacturers is a HUGE advantage if you're missing original installation documentation and/or drawings.

*...allow us to put your "house" in order*

❖ Interior maintenance, installations and upgrades are ideally addressed when the weather changes and suppliers/installers take their work indoors.

*...take advantage of competitive bids*



**Join us...  
Let's meet OUTSIDE the box!**

**Liz & Tom**



For your free initial consultation, contact us:

**Tel: 905-349-3596**

**Liz Gomes**

cell: 416-835-1853 | email: [liz@ascentcon.ca](mailto:liz@ascentcon.ca)

**Tom Behrends**

cell: 647-891-5172 | email: [tom@ascentcon.ca](mailto:tom@ascentcon.ca)